

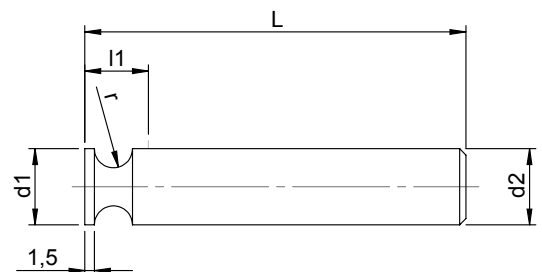
## RADIUS FORM END MILLS - CONCAVE

Radius form end mills are applied for the double-sided chamfering of a convex radius form on the work piece. Apart from the standard tool type in carbide, we can also manufacture a HSS-E version on request.



### STANDARD CUTTERS - VHM

- Dimensions: Shank diameter 6 - 20 mm, with parallel shank h6
- Form: Radius
- Clamping: With or without clamping flat
- Gearing: Straight toothed
- Type: Relief-ground



Radius r	Outside-Ø d1 (mm)	Flutes	Shank-Ø d2 (mm)	Length L (mm)	Cutting edge length l1 (mm)	VHM Art. No.
0,5	6	3	6	60	8	56090
0,6	6	3	6	60	8	56100
0,7	6	3	6	60	8	56110
0,8	6	3	6	60	8	56120
0,9	6	3	6	60	8	56130
1,0	8	3	8	60	8	56140
1,5	10	3	10	60	8	56150
1,9	10	3	10	60	8	56160
2	10	3	10	60	8	56170
2,1	10	3	10	60	10	56180
2,5	12	3	12	60	10	56190
3	12	3	12	60	10	56200
3,1	12	3	12	60	12	56210
3,5	12	3	12	60	12	56220
4	12	3	12	60	14	56230
4,1	12	3	12	60	14	56240
4,5	16	4	16	60	16	56250
5	16	4	16	60	16	56260
5,1	16	4	16	60	16	56270
5,5	16	4	16	60	16	56280
6	20	4	20	60	20	56290
6,1	20	4	20	60	20	56300
6,5	20	4	20	60	20	56310

### SPECIAL DESIGN

- Material: HSS-E / VHM
- Dimensions: Design according to feasibility and customer requirement
- Form: According to sample, drawing or work piece drawing
- Clamping: With or without clamping flat
- Gearing: Straight toothed or helical toothed
- Special features: In HSS-E fine-toothed